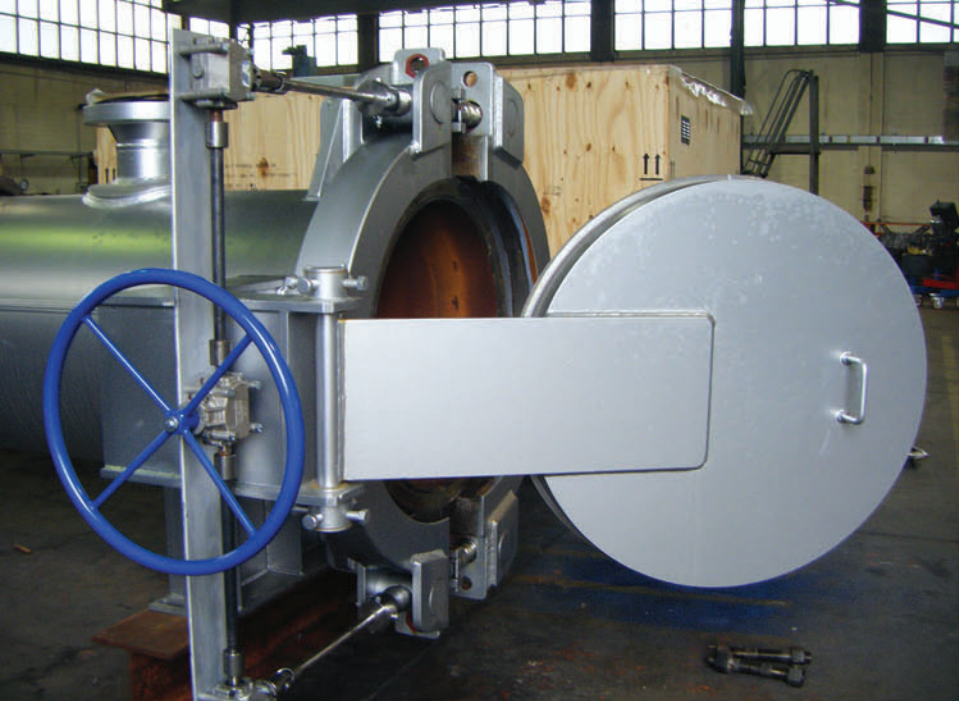


# Quick Opening Closure



**Natural Gas &  
Water Treatment**



### Materials:

Our Quick Opening Closures can be designed and manufactured using different type of raw material: Carbon Steel, Stainless Steel, Super Duplex Stainless Steel and Cladded Carbon Steel.

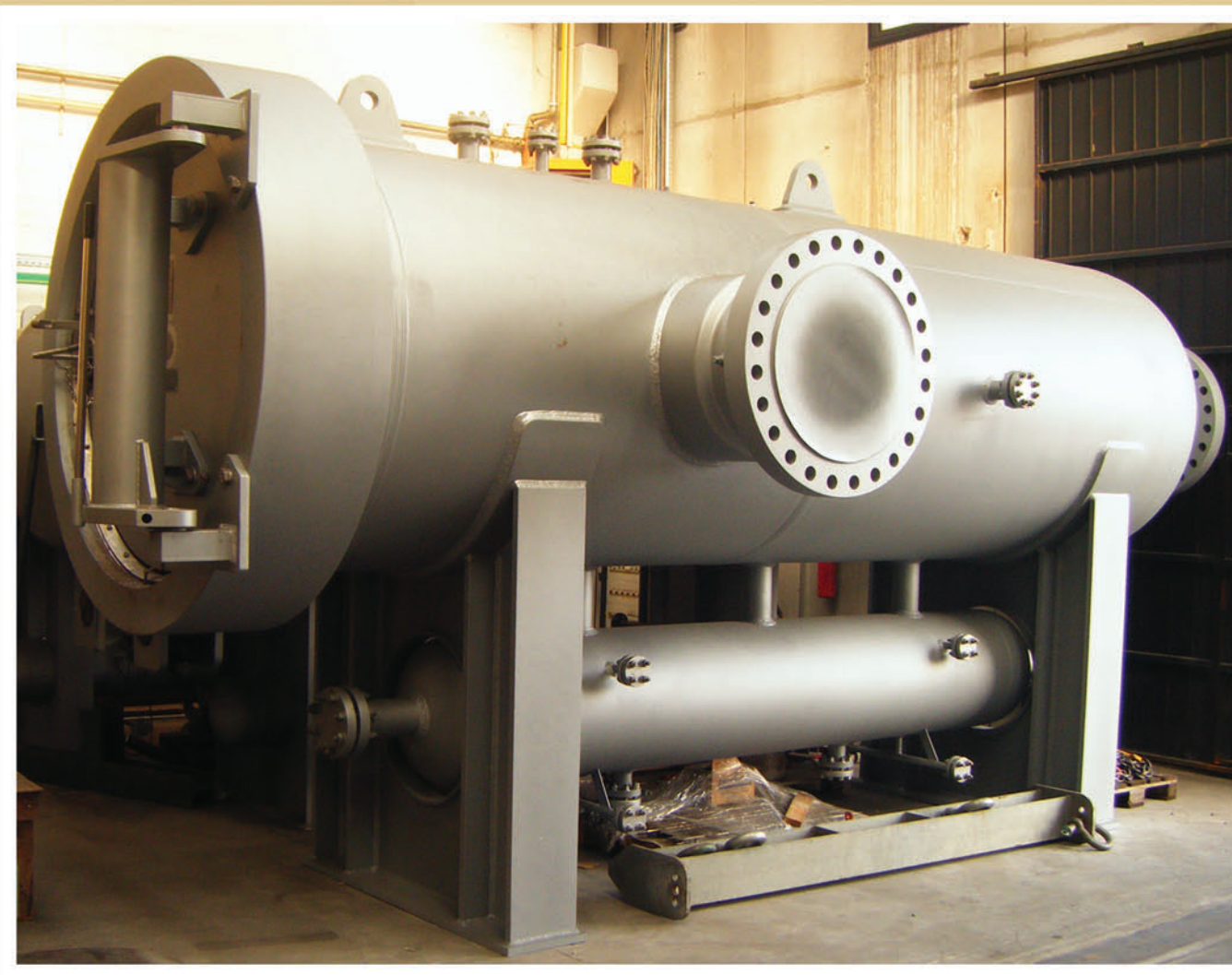


### Quick Opening Closure for Pressure Vessel

Delta Engineering srl designs and manufactures quick opening closures suitable for vertical and horizontal installation on Launching and Receiving Traps, Filters and Separators.

### Design

Delta Engineering srl designs according to international code such as ASME VIII DIV 1, GOST, EN, and Finite Element Analysis.

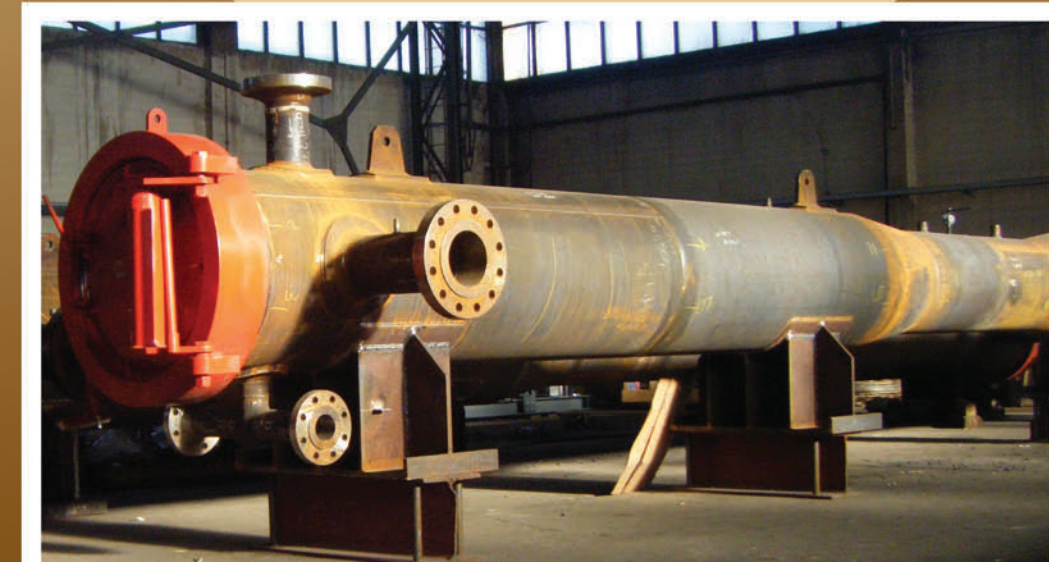


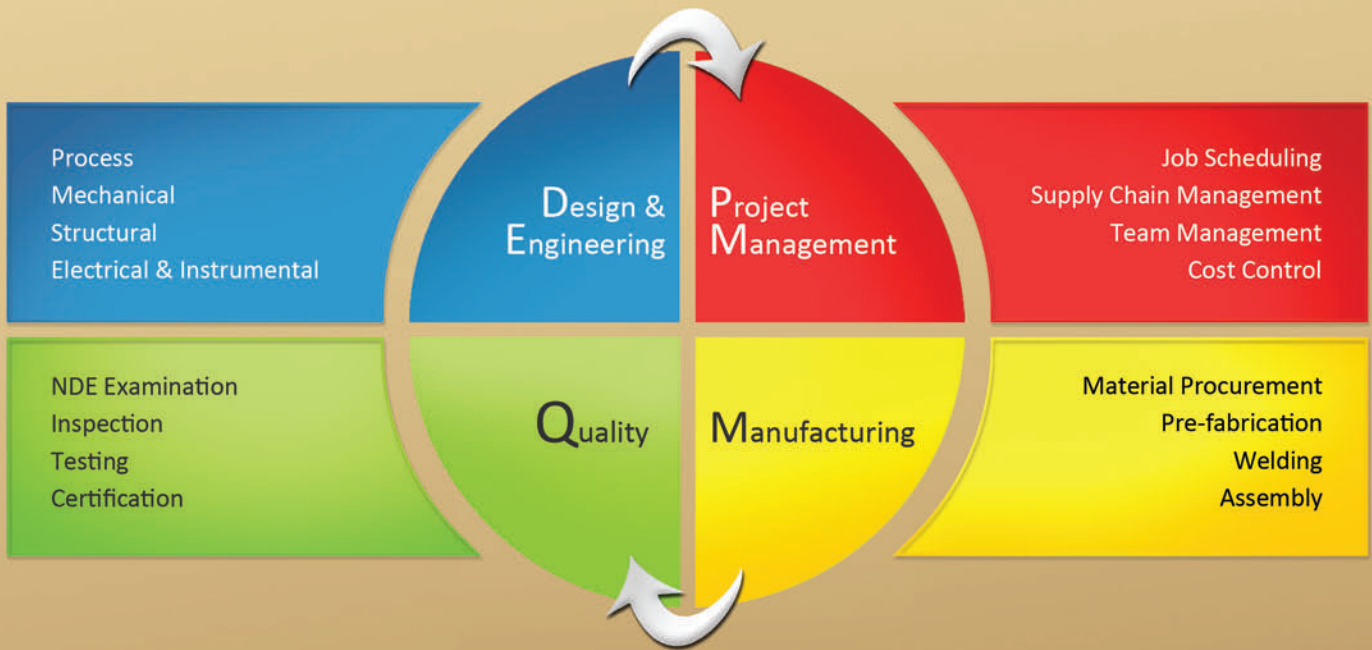
### Range of Dimension Pressure & Temperature:

- Diameter from 3"
- Temperature from -46 up to 200°C
- Pressure up to 500 bar

### Non destructive examination

Delta Engineering srl personnel is qualified to perform Ultrasonic, Radiographic, Magnetic and Dye Penetrant examinations.





Total Area: 8.000 m2  
 Covered Area: 3.000 m2  
 Open Area: 5.000 m2  
 Capacity Crane: 20 tons

Total Area: 4.000 m2  
 Covered Area: 2.000 m2  
 Open Area: 2.000 m2  
 Capacity Crane: 50 tons



Headquarter & Workshop #1



Workshop #2



our Brands

